

# A Radio Astronomer and an Architect Walk into a Bar...

John Klein

Software Engineering Institute  
Carnegie Mellon University  
Pittsburgh, PA 15213



Copyright 2018 Carnegie Mellon University. All Rights Reserved.

References herein to any specific commercial product, process, or service by trade name, trade mark, manufacturer, or otherwise, does not necessarily constitute or imply its endorsement, recommendation, or favoring by Carnegie Mellon University or its Software Engineering Institute.

NO WARRANTY. THIS CARNEGIE MELLON UNIVERSITY AND SOFTWARE ENGINEERING INSTITUTE MATERIAL IS FURNISHED ON AN "AS-IS" BASIS. CARNEGIE MELLON UNIVERSITY MAKES NO WARRANTIES OF ANY KIND, EITHER EXPRESSED OR IMPLIED, AS TO ANY MATTER INCLUDING, BUT NOT LIMITED TO, WARRANTY OF FITNESS FOR PURPOSE OR MERCHANTABILITY, EXCLUSIVITY, OR RESULTS OBTAINED FROM USE OF THE MATERIAL. CARNEGIE MELLON UNIVERSITY DOES NOT MAKE ANY WARRANTY OF ANY KIND WITH RESPECT TO FREEDOM FROM PATENT, TRADEMARK, OR COPYRIGHT INFRINGEMENT.

[DISTRIBUTION STATEMENT A] This material has been approved for public release and unlimited distribution. Please see Copyright notice for non-US Government use and distribution.

This material may be reproduced in its entirety, without modification, and freely distributed in written or electronic form without requesting formal permission. Permission is required for any other use. Requests for permission should be directed to the Software Engineering Institute at [permission@sei.cmu.edu](mailto:permission@sei.cmu.edu).

Architecture Tradeoff Analysis Method® and ATAM® are registered in the U.S. Patent and Trademark Office by Carnegie Mellon University.

DM18-0556

# Outline



## **The Challenge**

**A little bit of background and context**

**The Architecture Integration Workshop**

## **Retrospective**

- What worked
- What didn't work
- Why we think it worked

**Some evidence about the outcome**

**Conclusions and take-aways**

# A **Radio Astronomer** and an **Architect** walk into a bar..

We're building a REALLY big radio telescope. There's a lot of software.  
I'm worried. I can't sleep during the day.

Don't you mean "can't sleep at night"?

I'm an astronomer. I work all night and I *used to* sleep during the day.

What has you so worried?

Lots of subsystems. Each designed by a different team.  
Teams are spread across the world. I don't have much authority.

What leverage do you have?

Well, I have to accept the architecture documentation at the  
Critical Design Review. I need visibility into how the pieces will  
work together.

We can help you with that.

Can you help us develop better documentation,  
so I can assess the risks?

Sure.

We don't have much time or money.

What else is new?

# A REALLY Big Radio Telescope

“One of the most visionary and ambitious science projects of the 21st century.

The Square Kilometre Array (SKA) radio telescope will ultimately be the largest scientific instrument on Earth, both in physical scale and in terms of the volume of data it will generate.”

(From the Square Kilometre Array Prospectus)

Two Antenna Arrays

- Mid Frequency – South Africa
- Low Frequency – Western Australia

Supercomputing centres

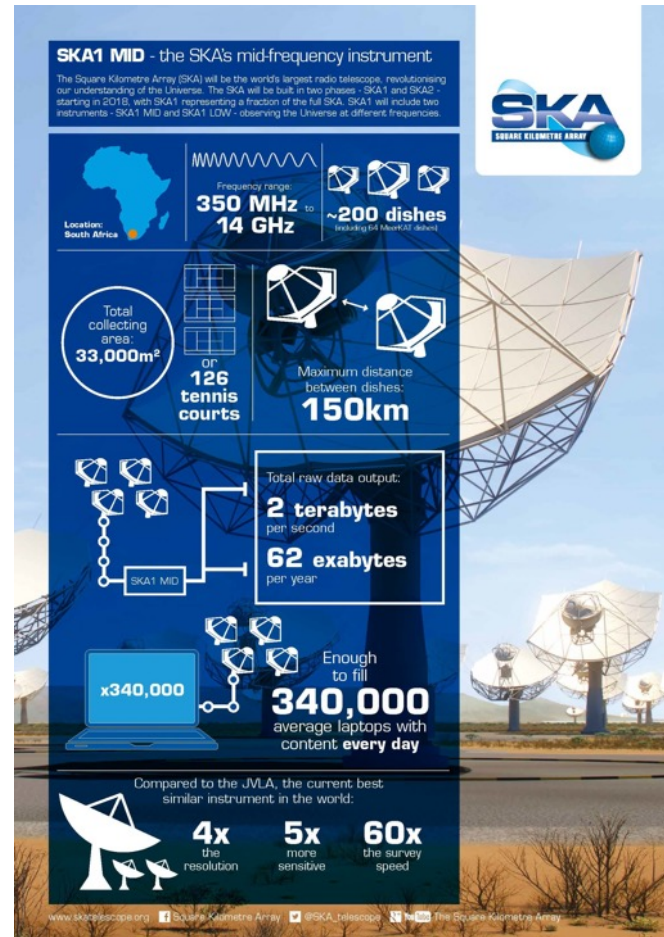
50-year system operational life

Managed from Global HQ, Jodrell Bank, UK



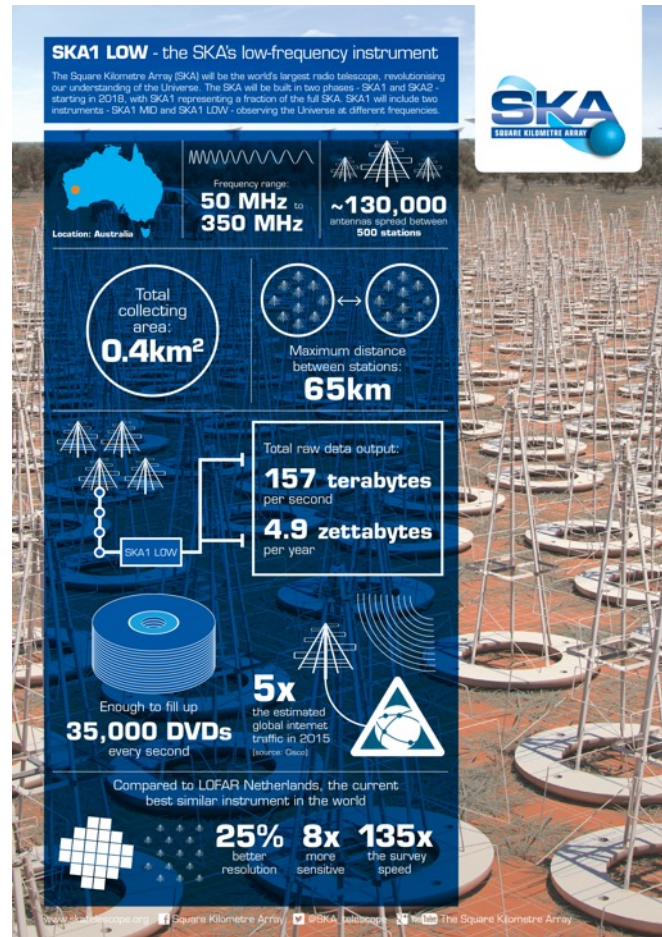
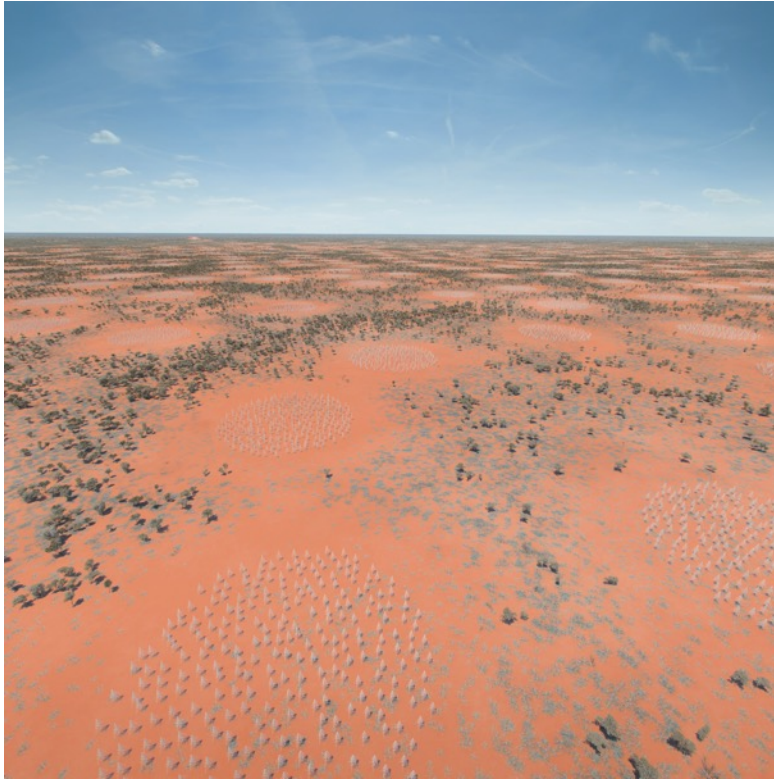
Image courtesy of  
SKA Organisation

# Mid-Frequency Array



Images courtesy of SKA Organisation

# Low Frequency Array



Images courtesy of SKA Organisation

# Engagement Context

## Constraints:

Single face-to-face workshop

- Multi-day event
- At SKA HQ, Jodrell Bank, England

Very limited funding for preparation and follow-up

This project phase is a bit waterfall-ish

- Need to do enough design to demonstrate an acceptable level of “construction” risk
- “Construction” comes later, will include software design and development using SAFe

## Participants:

30 attendees from 16 institutes across 8 countries, ~12 nationalities

Lots of domain knowledge, not just software developers

- Lots of hands-on coding experience
- Little formal software eng. training

Strong formal systems engineering/ requirements analysis capability

Strong project management capability

## Consultants:

Funding limited us to 2 people: Neil Ernst and John Klein.



# Architecture Integration Workshop

Agile Mindset–YAGNI → Just Enough Learning

- Reuse/remix material from SEI course modules

Motivate the need for architecture design and documentation by doing analysis of the SKA system

- Find important questions that are hard to answer without sufficient documentation

Maximize hands-on practice to start producing artifacts for the SKA subsystems

- Leave the workshop with something useful



# Workshop Outline

## Monday

- Introductions
- First mission thread analysis

## Tuesday

- Discussion: Commonalities and themes across the findings of the first mission thread analysis.
- Learning Module: Quality Attributes

## Wednesday

- Facilitated Working Session: Quality attribute scenarios
- Learning Module: Introduction to Views and Beyond documentation method

## Thursday

- Second mission thread analysis
- Learning Module: Interface and behavior documentation

## Friday

- Organize and prioritize quality attribute findings
- Assess mission thread coverage
- Wrap-up

## Saturday

- Working session to tailor documentation template
- Start of practice and coaching session

## Sunday

- Complete practice and coaching session.
- Final wrap-up

# What Worked

## Just-in-time training

- Analysis – Identify a problem in our system/process
- Training – Learn a method to fix the problem
- Practice – Fix the problem, with SEI coaching

All exercises were based on the SKA system, and produced artifacts that attendees could actually use – demonstrated feasibility and value of the approach

- Mission thread with variations
- Quality attribute scenarios
- Produced design and documentation for 3 views, and parts of others

# What didn't work so well

Defining a mission thread with such a large group – you need to go in with the steps already defined (at least 80%)

The group was not comfortable abstracting any part of the system – maybe a symptom of the diversity of the group and the scientific background?

- Couldn't treat anything as a black box
- Every detail had to be complete and accurate
- Every analysis had to be end-to-end

Facilitation – balancing velocity against individual learning paces, cutting off questions and discussion to keep moving. We got early feedback from the client and were able to correct this.

7 straight days is a long time to go with no downtime.

I started having opinions about the architecture drivers and design – shifted from coaching to problem solving and directing

# Why it worked

## (Missing any of these could have been fatal)

Attendees were extremely engaged and willing to learn – right through to the end of the last day

Context knowledge (Neil's experience with the scientific software community)

Domain knowledge (John's experience with phased array radar and signal processing, along with a little bit of amateur-level astronomy knowledge)

Flexibility – we brought a lot of material with us, and added and removed content as we learned more about attendees strengths and gaps

Physical fitness – 7 long days with the attendees, including after-work meetings and group dinners

Outstanding logistical support from the client's organization – we could focus 100% on delivery

# Fast-forward one year...

Time for the Critical Design Review for one major system element

- Review objective: Is the construction risk level acceptable?
- Decided to use an ATAM-style scenario-based evaluation as part of the review

Documentation artifacts were sufficient to support the evaluation

- Analyzed 9 scenarios over ~14 hours (including breaks)
- Documentation facilitated efficient and detailed discussion of architecture decisions – no analyses were stopped early because of insufficient documentation
- High quality evaluation – most of the identified risks were narrowly scoped

Element teams had used quality attribute scenarios to drive the architecture design

- We tailored the ATAM process to take advantage of all of the work that was already completed – we are saving the details about that for another talk ;)

# Conclusion and Take-aways

**A little bit of just-in-time hands-on architecture training can have a big impact in the right context**

The right context:

- Organizational commitment
- Architects open to new approaches
- The selected approach solves visible problems
- Architects have the experience to see the value in solving the problems

Executing the training is hard work (for everyone involved)

Ongoing post-training coaching might have improved the outcome even more

# Acknowledgements

Nick Rees

Head of Computing and Software,  
Square Kilometre Array Organisation

All of the Architecture Workshop Attendees

Neil Ernst, Workshop Co-Instructor

<http://www.skatelescope.org/>

Exploring the Universe with the world's  
largest radio telescope...

<https://www.sei.cmu.edu/architecture>