



The CMMI[®] Product Suite and International Standards

Dave Kitson, Jeanie Kitson, Terry Rout and Pedro Sousa



© CMMI is registered in the US Patent & Trademark Office by Carnegie Mellon University

Sponsored by the U.S. Department of Defense

© 2006 by Carnegie Mellon University

This material is approved for public release.

Agenda

Evolution of Capability Maturity Models® and ISO/IEC 15504

ISO/IEC 15504 Overview and Status

CMMI Synergy with International Standards

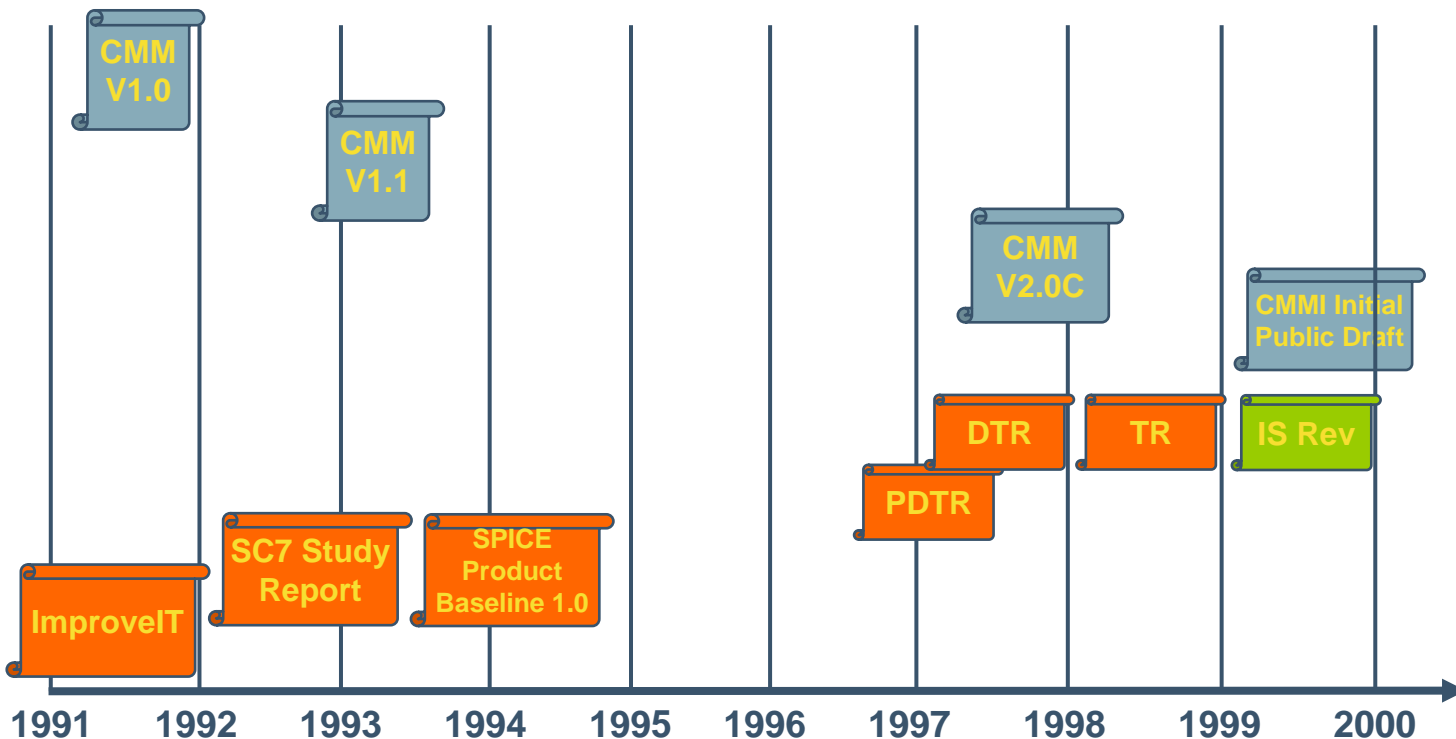
Work to be Done

Future Directions

® Capability Maturity Model is registered in the U.S. Patent and Trademark Office by Carnegie Mellon University



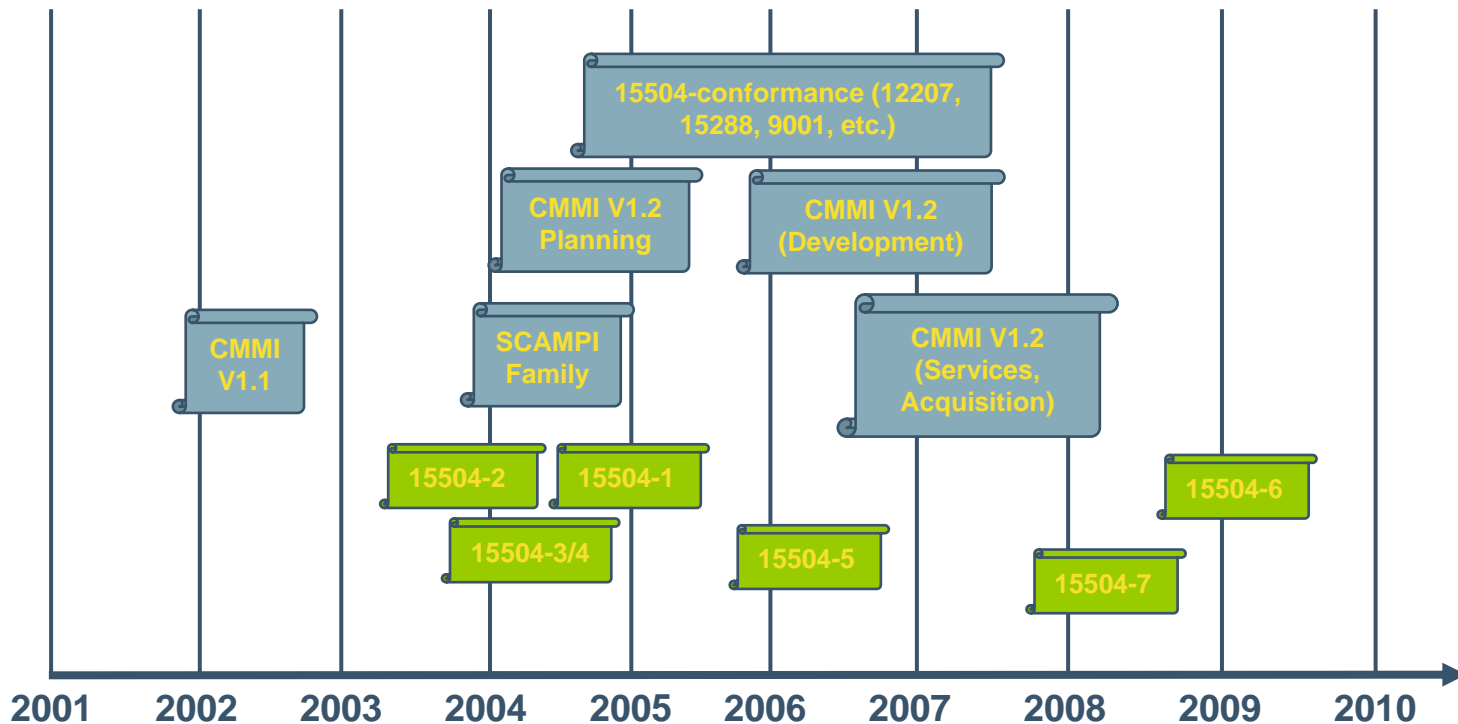
Progression of CMMs[®] and 15504 -1



® CMM is registered in the U.S. Patent and Trademark Office by Carnegie Mellon University



Progression of CMMs and 15504 -2



What EXACTLY is 15504?

ISO/IEC 15504 is an international standard being progressed by WG10 - a working group established by ISO/IEC/JTC1 SC7.

Prescribes requirements for process assessment; is a framework standard.

Consists of 5 documents (15504-1, ..., 15504-5); note that all parts are now published.

Not the same as ISO/IEC TR 15504 – this is a 9-part set of documents published as ISO Technical Reports in 1998.

Key Premise Underlying 15504

Assessments of process capability will yield results which are comparable as long as:

- **the process assessment model satisfies 15504 model compatibility requirements**
- **the assessment process satisfies 15504 assessment requirements**
- **the assessment contexts are similar**



Evolution of 15504 Specificity

1st generation (pre-Pilanesburg) - practices were HARD-WIRED into 15504 (as a normative component - BPG)

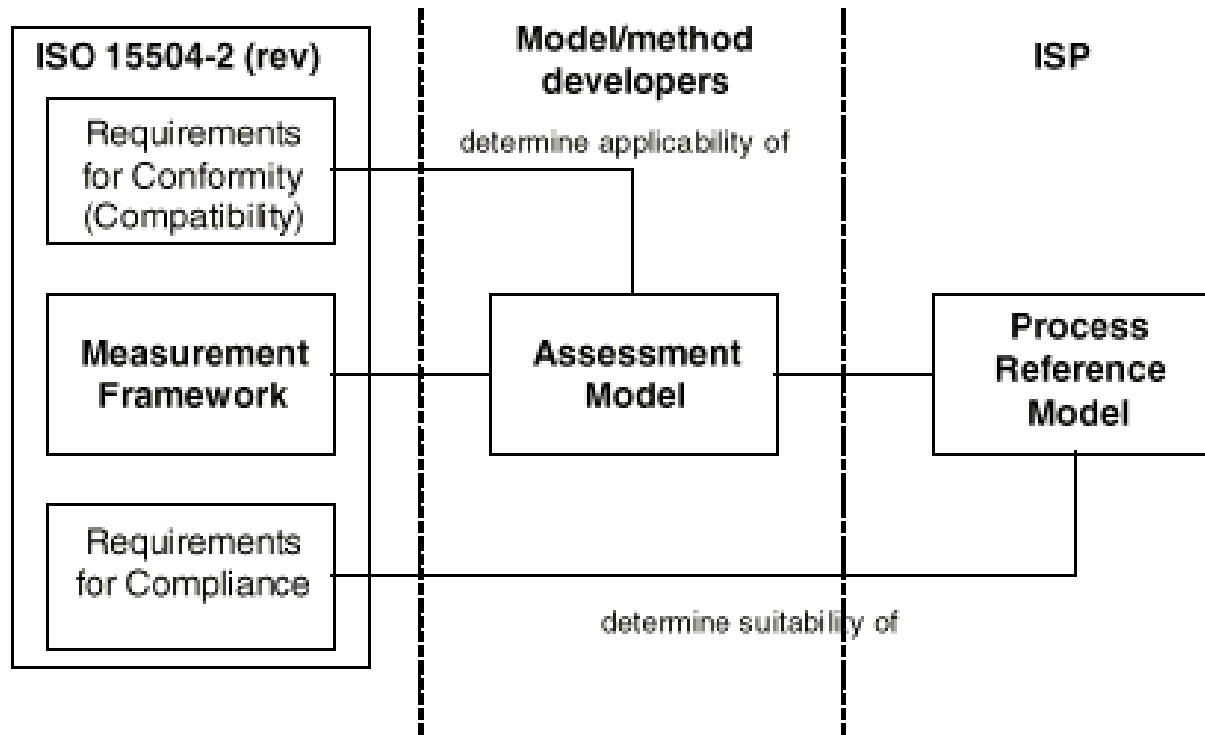
2nd generation (pre-IS) - process definitions were HARD-WIRED into 15504 (as a normative component - 15504-2)

3rd generation (IS) - compliance requirements for Process Reference Models (PRMs) HARD-WIRED into 15504 (as a normative component - 15504-2):

- **PRMs will be externally specified**
- **12207 includes as an amendment a PRM encompassing TR 15504-2 process definitions (and more)**



Architecture for 15504



CMMI and 15504

A-spec requirements relevant to international standards:

“2.3 Reference Documents

2.3.1 Applicable ISO/IEC documents, including ISO/IEC 12207 and ISO/IEC 15504.”

“3.1 Development User Requirements

3.1.6 The CMMI Product Suite shall be consistent and compatible with ISO/IEC 15504.”



Synergy With Selected International Standards -1

Identify areas where there are opportunities for synergy between key international standards and the CMMI Product Suite

Exploit these opportunities by developing appropriate work products and/or liaising with appropriate individuals and organizations

Synergy With Selected International Standards -2

Two of the key areas identified to date are the ISO 9000:2000 family of standards and the ISO/IEC 15504 standard

Note that 15504 provides a mechanism for establishing important relationships to other important process-related international standards such as ISO 9001:2000, 12207, 15288



Key Supplements Needed

Identification of suitable process reference models,

**Mappings between CMMI model (s) and PRM (s)
satisfying 15504 -2 requirements,**

Translation mechanism

Translation Mechanism

Purpose: for representing the results of an assessment as a set of process attribute ratings for each process selected from the specified Process Reference Model

How?:

- 1. direct translation of Process Assessment Model ratings into a process profile**
- 2. or the conversion of the data collected during the assessment (with the possible inclusion of additional information) through further judgment on the part of the assessor.**

Status

A detailed mapping has been developed from CMMI to:

- **the Measurement Framework in ISO/IEC 15504; and**
- **the Process Reference Model included in ISO/IEC 12207.**

A possible approach has been developed for verifiable conversion of results.



An Approach for Data Conversion - 1

For the Process Dimension:

- **Collect data and generate observations for all Specific Practices in Process Areas within the scope of the assessment.**
- **Using the mapping tables, assign the data observations to all Process Outcomes and Attributes indicated from the mapping.**
 - **Thus, if a Specific Practice maps to multiple Process Outcomes, assign the data to all of the possibilities.**
- **Review the assigned data and remove observations that are not relevant.**
- **Judge whether the remaining data is adequate to enable judgement of achievement of the outcomes.**



An Approach for Data Conversion - 2

Where adequate data is available, consolidate the data to the process level and rate the performance of the process (Process Attribute 1.1).

If the data is not adequate, either:

- Collect additional data; or
- Remove the process from the 15504 scope of the appraisal.

An Approach for Data Conversion - 3

Repeat the exercise for the Generic Practices and Process Attributes 2.1 – 5.2.

Additional data will need to be collected to address gaps in the mapping

- Most notably in Process Attribute 3.2

In some cases, evidence from Advanced Practices may also be relevant to a particular Process Attribute for a specific Process or set of Processes.

Tool Support

To achieve this form of conversion is complex and difficult, without tool support.

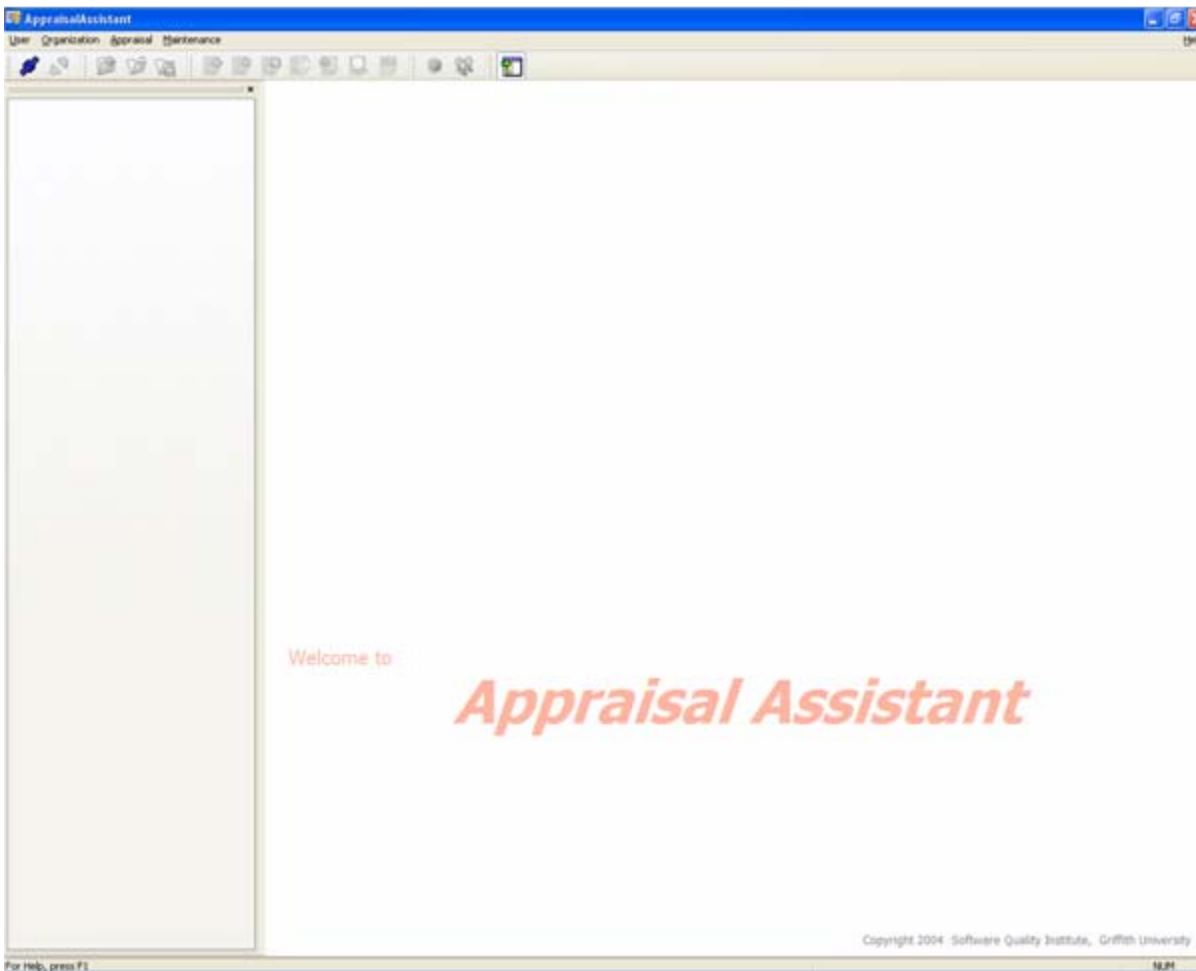
A tool (the Appraisal Assistant) has been developed for managing evidence and ratings in CMMI appraisals, with a specific focus on conversion of data to generate ISO15504 Process Profiles.

The tool automatically generates lists of data for a Process Attribute based upon detailed ratings tables.

- It permits de-selection of data judged to be not relevant.
- It highlights areas where there may be a lack of relevant evidence.



The Appraisal Assistant



Model Details

Standard Appraisal Model Editor

Process Specific Dimension | Generic Dimension

Name: Estimate the Scope of the Project

Acronym: SP1.1-1 **Capability:** Level 1

Group: **Maturity:** **C. Feature:** **P.I.I. Type:**

Practice Included in Stage Representation

Appraisal Consideration

- Determination of WBS usage for this practice must be based on top-level WBS only, not its fully elaborated and expanded form as referenced in subsequent practices of this PA
- Top-level work breakdown structure should be driven by and linked to specified product requirements. (See Requirements Management PA)

Summary

Establish a top-level work breakdown structure (WBS) to estimate the scope of the project

Related ISO-12207 Process Outcomes/ISO-15504-2 Attribute Achievements

- F.3.1.3/1 The scope of the work for the project is defined(Process specific)
- F.3.6/4 The reuse potential of each domain is assessed(Process specific)
- F.3.6/5 Reuse proposals are evaluated to ensure the reuse product is su

Framework Selection

CMMI ISO 12207/15504-5

Add Process Area

Add Goal

Add Practice

Add P.I.I.

Delete Subtree

Max. Capability Level: 5

Delete All Mapping

Import Mapping Table

Add Mapping

Delete Mapping

Close



Pilot Appraisal

15504-conformant SCAMPI A appraisal conducted at Critical Software, SA during February-March 2006

- **Maturity level 3 scope**
- **Process reference model embedded in ISO/IEC 12207 (amended)**
- **Mapping between CMMI and 12207 provided by Software Quality Institute**
- **Appraisal team included 3 SCAMPI Lead appraisers , one ISO 9001 auditor and one SPICE assessor**
- **Support automation provided by Software Quality Institute – Appraisal Assistant**
- **Subset of 15504 process profiles generated as well as selected ISO 9001 outcomes.**



Project Management Process

Maps to elements from the following Process Areas:

- Project Planning
- Project Monitoring and Control
- Supplier Agreement Management
- Requirements Management
- Integrated Project Management
- Quantitative Project Management

With minor linkages to

- Organizational Process Performance
- Risk Management
- Verification



Project Management Process

ISO15504 Process Profiler

Process Name: F.3.1.3 Project management
The purpose of the Project management process is to identify, establish, co-ordinate, and monitor the activities, tasks, and resources necessary for a project to produce a product and/or service, in the context of the project's requirements and constraints

Process Attribute Achievement: Fully Achieved

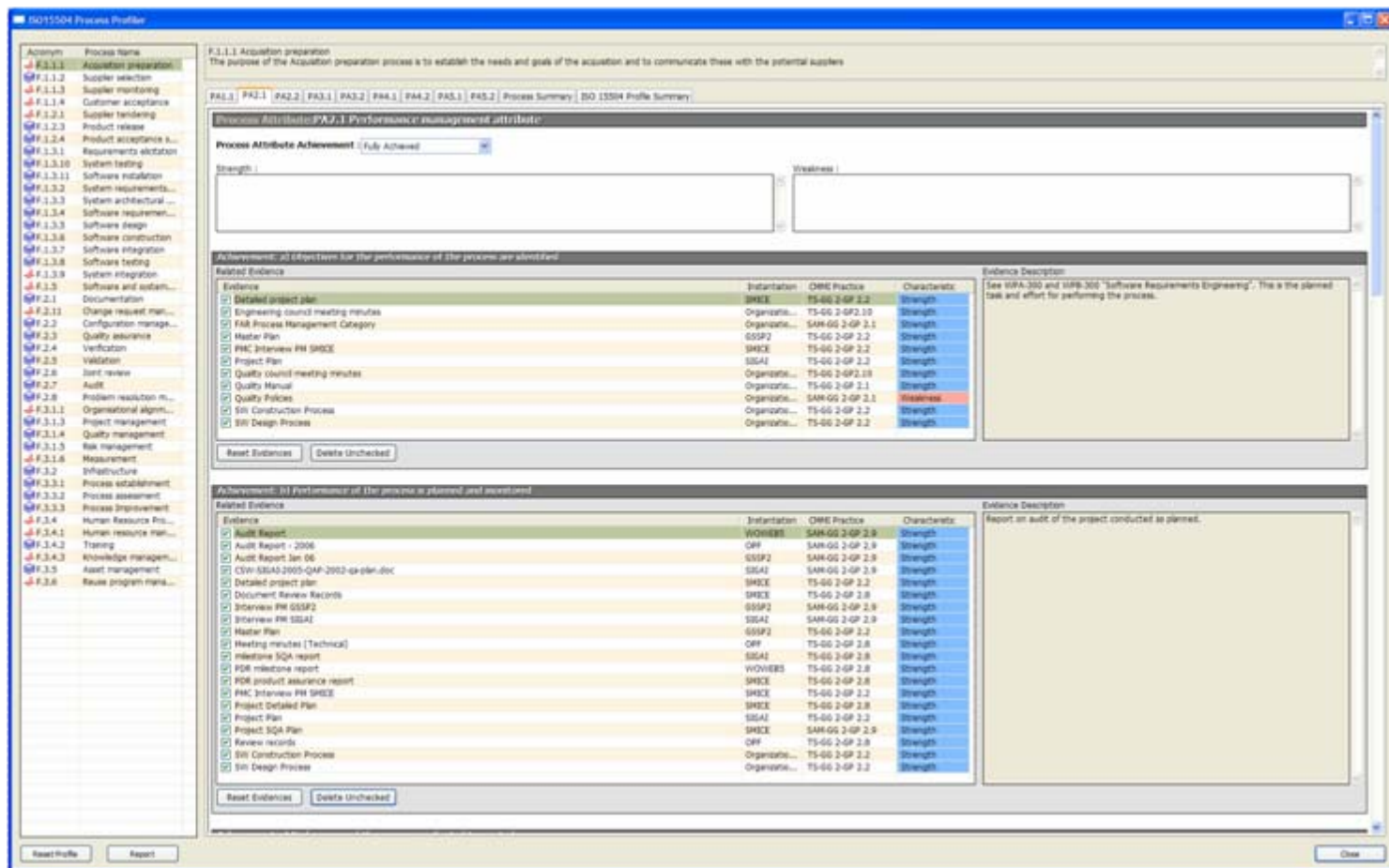
Strength: [Empty field]

Weakness: [Empty field]

Outcomes: [1] The scope of the work for the project is defined

Evidence	Implementation	MMI Practice	Characteristics	Evaluating Description
<input checked="" type="checkbox"/> Analysis Phase Overview Presentation	GSDF2	PP-SG 1-SP1.2-1	Strength	Presentation - analysis overview
<input checked="" type="checkbox"/> Architecture (deliverable)	SSAI1	PP-SG 1-SP1.2-1	Strength	
<input checked="" type="checkbox"/> Audit Report	WOH8ES	REQM-SG 1-SP1.5-1	Strength	
<input checked="" type="checkbox"/> CSW-2004-FRL (REQ-stetmas-mca-technical.doc)	SMICE	PP-SG 2-SP2.4-1	Strength	
<input checked="" type="checkbox"/> raw-qp1-open-project-form.doc	OFF	PP-SG 2-SP2.4-1	Strength	
<input checked="" type="checkbox"/> CSW-QM1-2003-PCS-2206-project-ifa-cycle5.pdf	WOH8ES	PP-SG 1-SP1.3-1	Strength	
<input checked="" type="checkbox"/> CSW-SSEA1-2005-QAP-2002-qa-plan.doc	SSAI1	PP-SG 1-SP1.3-1	Strength	
<input checked="" type="checkbox"/> CSW-SMICE-2004-GPL-2813-stetmas-mca-detailed-plan.mpp	SMICE	PP-SG 2-SP2.4-1	Strength	
<input checked="" type="checkbox"/> Detailed Plan Analysis phase	GSDF2	PP-SG 2-SP2.4-1	Strength	
<input checked="" type="checkbox"/> Enterprise architecture file (with used with Request# - from Spandystems - for requirements change management)	WOH8ES	REQM-SG 1-SP1.5-1	Strength	
<input checked="" type="checkbox"/> Exceptions and non-compliance	GSDF2	REQM-SG 1-SP1.5-1	Strength	
<input checked="" type="checkbox"/> External Meeting minutes with consensus	GSDF2	REQM-SG 1-SP1.5-1	Strength	
<input checked="" type="checkbox"/> RAK Support Category	WOH8ES	PP-SG 2-SP2.1-1	Strength	
<input checked="" type="checkbox"/> Financial maps	SSAI1	PP-SG 2-SP2.1-1	Strength	
<input checked="" type="checkbox"/> Financial Proposal	SSAI1	PP-SG 2-SP2.1-1	Strength	
<input checked="" type="checkbox"/> http://vms.critical.ac/online/management/project-management/CSW-QM1-2003-PCS-LT78-project-management.pdf	GSDF2	PP-SG 2-SP2.4-1	Strength	
<input checked="" type="checkbox"/> Interview QP Team	OFF	REQM-SG 1-SP1.5-1	Strength	
<input checked="" type="checkbox"/> Interview PM	GSDF2	PP-SG 1-SP1.3-1	Strength	
<input checked="" type="checkbox"/> Interview SMICE team	SMICE	PP-SG 1-SP1.3-1	Strength	
<input checked="" type="checkbox"/> Management proposal	SSAI1	PP-SG 1-SP1.3-1	Strength	
<input checked="" type="checkbox"/> Master Plan	GSDF2	PP-SG 2-SP2.4-1	Strength	
<input checked="" type="checkbox"/> Meeting minutes (Technical)	OFF	REQM-SG 1-SP1.5-1	Strength	
<input checked="" type="checkbox"/> Modeling Overview Presentation	GSDF2	PP-SG 1-SP1.2-1	Strength	
<input checked="" type="checkbox"/> open-project-stetmas-mca.doc	SMICE	PP-SG 2-SP2.4-1	Strength	
<input checked="" type="checkbox"/> QP Team Interview	OFF	PP-SG 1-SP1.5-1	Strength	
<input checked="" type="checkbox"/> Project Life Cycle Management Process	GSDF2	PP-SG 1-SP1.3-1	Strength	
<input checked="" type="checkbox"/> Project Progress Reports	SSAI1	REQM-SG 1-SP1.5-1	Strength	
<input checked="" type="checkbox"/> Proposal: part5-technical-proposal	GSDF2	PP-SG 1-SP1.3-1	Strength	
<input checked="" type="checkbox"/> Prototype presentation to the customer	SMICE	REQM-SG 1-SP1.5-1	Strength	
<input checked="" type="checkbox"/> Requirements doubts meeting	REQM-SG	REQM-SG 1-SP1.5-1	Strength	
<input checked="" type="checkbox"/> RFD Form	GSDF2	REQM-SG 1-SP1.5-1	Strength	
<input checked="" type="checkbox"/> SSAI1 - Master Plan.mpp	SSAI1	PP-SG 2-SP2.1-1	Strength	
<input checked="" type="checkbox"/> Statement of work	GSDF2	PP-SG 1-SP1.3-1	Strength	
<input checked="" type="checkbox"/> System requirements review report	SMICE	REQM-SG 1-SP1.5-1	Strength	
<input checked="" type="checkbox"/> Technical proposal	SSAI1	PP-SG 1-SP1.3-1	Strength	
<input checked="" type="checkbox"/> User requirements review report	SMICE	REQM-SG 1-SP1.5-1	Strength	
<input checked="" type="checkbox"/> Workshop with customer for presenting requirements for analysis	WOH8ES	REQM-SG 1-SP1.5-1	Strength	
<input checked="" type="checkbox"/> WOH8ES PM Interview	WOH8ES	PP-SG 1-SP1.3-1	Strength	

PA 2.1 – Process Management



The screenshot displays the ISO15504 Process Profile software interface. The main window shows the details for process attribute PA2.1, Performance management attribute. The process is marked as 'Fully Achieved'. The interface includes a navigation pane on the left, a central table of evidence, and a description of the process on the right.

Process Attribute: PA2.1 Performance management attribute

Process Attribute Achievement: Fully Achieved

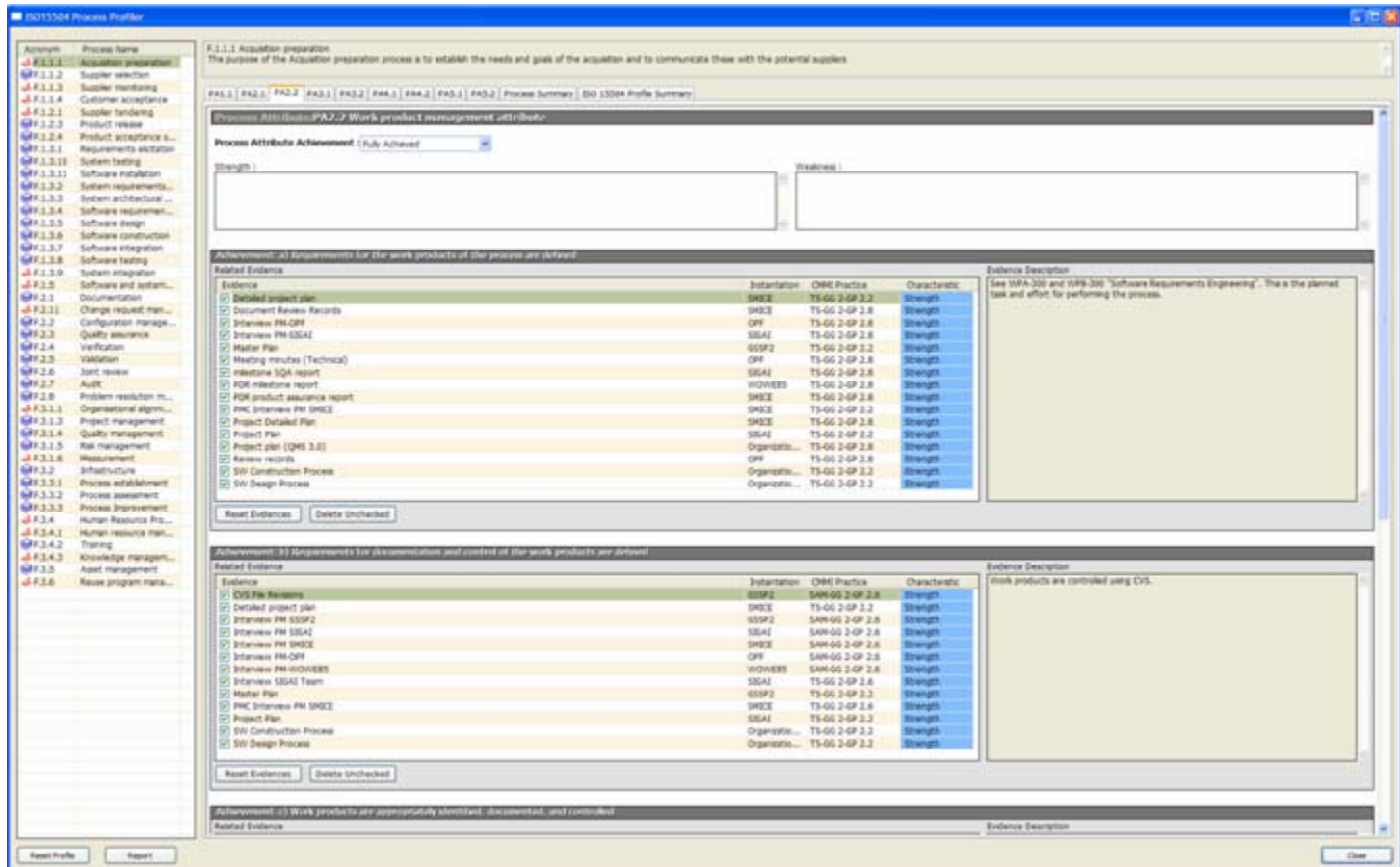
Achievement: All objectives for the performance of the process are identified

Evidence	Instantiation	OME Practice	Characteristics	Strength
<input checked="" type="checkbox"/> Detailed project plan	SHCE	TS-GG 2-GP 2.2	Strength	Strength
<input checked="" type="checkbox"/> Engineering board meeting minutes	Organizat...	TS-GG 2-GP 2.9	Strength	Strength
<input checked="" type="checkbox"/> FMB Process Management Category	Organizat...	SAM-GG 2-GP 3.1	Strength	Strength
<input checked="" type="checkbox"/> Master Plan	SSPF2	TS-GG 2-GP 2.2	Strength	Strength
<input checked="" type="checkbox"/> FMC Interview FM SHCE	SHCE	TS-GG 2-GP 2.2	Strength	Strength
<input checked="" type="checkbox"/> Project Plan	SSAI	TS-GG 2-GP 2.2	Strength	Strength
<input checked="" type="checkbox"/> Quality board meeting minutes	Organizat...	TS-GG 2-GP 2.9	Strength	Strength
<input checked="" type="checkbox"/> Quality Manual	Organizat...	TS-GG 2-GP 3.1	Strength	Strength
<input checked="" type="checkbox"/> Quality Policies	Organizat...	SAM-GG 2-GP 2.1	Weakness	Weakness
<input checked="" type="checkbox"/> SW Construction Process	Organizat...	TS-GG 2-GP 2.2	Strength	Strength
<input checked="" type="checkbox"/> SW Design Process	Organizat...	TS-GG 2-GP 2.2	Strength	Strength

Achievement: All performance of the process is planned and executed

Evidence	Instantiation	OME Practice	Characteristics	Strength
<input checked="" type="checkbox"/> Audit Report - 2006	WOWERS	SAM-GG 2-GP 2.9	Strength	Strength
<input checked="" type="checkbox"/> Audit Report - Jan 06	OFF	SAM-GG 2-GP 2.9	Strength	Strength
<input checked="" type="checkbox"/> CSW-SIA3-2005-QAP-2002-qa-eln.doc	SSAI	SAM-GG 2-GP 2.9	Strength	Strength
<input checked="" type="checkbox"/> Detailed project plan	SHCE	TS-GG 2-GP 2.2	Strength	Strength
<input checked="" type="checkbox"/> Document Review Records	SHCE	TS-GG 2-GP 2.9	Strength	Strength
<input checked="" type="checkbox"/> Interview FM SSPF2	SSPF2	SAM-GG 2-GP 2.9	Strength	Strength
<input checked="" type="checkbox"/> Interview FM SSAI	SSAI	SAM-GG 2-GP 2.9	Strength	Strength
<input checked="" type="checkbox"/> Master Plan	SSPF2	TS-GG 2-GP 2.2	Strength	Strength
<input checked="" type="checkbox"/> Meeting minutes (Technical)	OFF	TS-GG 2-GP 2.9	Strength	Strength
<input checked="" type="checkbox"/> Milestone SQA report	SSAI	TS-GG 2-GP 2.9	Strength	Strength
<input checked="" type="checkbox"/> PDR milestone report	WOWERS	TS-GG 2-GP 2.9	Strength	Strength
<input checked="" type="checkbox"/> PDR product assurance report	SHCE	TS-GG 2-GP 2.9	Strength	Strength
<input checked="" type="checkbox"/> FMC Interview FM SHCE	SHCE	TS-GG 2-GP 2.2	Strength	Strength
<input checked="" type="checkbox"/> Project Detailed Plan	SSAI	TS-GG 2-GP 2.2	Strength	Strength
<input checked="" type="checkbox"/> Project Plan	SHCE	SAM-GG 2-GP 2.9	Strength	Strength
<input checked="" type="checkbox"/> Project SQA Plan	OFF	TS-GG 2-GP 2.9	Strength	Strength
<input checked="" type="checkbox"/> Review records	OFF	TS-GG 2-GP 2.9	Strength	Strength
<input checked="" type="checkbox"/> SW Construction Process	Organizat...	TS-GG 2-GP 2.2	Strength	Strength
<input checked="" type="checkbox"/> SW Design Process	Organizat...	TS-GG 2-GP 2.2	Strength	Strength

PA 2.2 – Work Product Management



The screenshot displays the CMMI Process Profiler interface for PA 2.2, Work Product Management. The left sidebar shows a tree view of process areas, with PA 2.2 expanded. The main window is divided into several sections:

- Process Attributes:** Shows the process name and a dropdown menu for 'Process Attribute Achievement' set to 'Fully Achieved'.
- Related Evidence:** A table listing evidence items with columns for Evidence, Instance, CMMI Practice, and Characteristic. The table is filtered to show items related to 'Detailed project plan'.
- Evidence Description:** A text box providing a description for the selected evidence, such as 'See 1094-200 and 1099-200 "Software Requirements Engineering". This is the planned task and effort for performing the process.'
- Related Evidence (Bottom):** A second table listing evidence items related to 'Detailed project plan'.
- Evidence Description (Bottom):** A text box providing a description for the selected evidence, such as 'Work products are controlled using CVS.'

Buttons for 'Reset Evidence(s)', 'Delete Unchecked', 'Reset Profile', 'Report', and 'Close' are visible at the bottom of the interface.



PA 3.1 – Process Definition

ISO15504 Process Profiler

Process Name: F.1.1.1 Acquisition preparation
The purpose of the Acquisition preparation process is to establish the needs and goals of the acquisition and to communicate these with the potential supplier.

Process Attribute Achievement: (Not Rated)

Strength: [] Weakness: []

Requirement: A standard process, including appropriate evidence packages, is defined that describes the fundamental elements that must be incorporated into a defined process.

Evidence	Instantiation	OMG Practice	Characteristic
<input checked="" type="checkbox"/> Interview PRO-06	QPF	TS-06-3-SP3.1	Strength
<input checked="" type="checkbox"/> KDM minute	SMCE	TS-06-3-SP3.1	Strength
<input checked="" type="checkbox"/> KDM Presentation	SMCE	TS-06-3-SP3.1	Strength
<input checked="" type="checkbox"/> Project Life Cycles	Organizati...	TS-06-3-SP3.1	Strength
<input checked="" type="checkbox"/> Project Management Process	Organizati...	TS-06-3-SP3.1	Strength
<input checked="" type="checkbox"/> Project Master Plan	SMCE	TS-06-3-SP3.1	Strength
<input checked="" type="checkbox"/> Project SQA Plan	QPF	TS-06-3-SP3.1	Strength
<input checked="" type="checkbox"/> Project Technical and Management proposal	SMCE	TS-06-3-SP3.1	Strength
<input checked="" type="checkbox"/> Proposal	WOWERS	TS-06-3-SP3.1	Strength
<input checked="" type="checkbox"/> QA Plan Template	Organizati...	TS-06-3-SP3.1	Strength
<input checked="" type="checkbox"/> Quality Assurance Plan	OSPF2	TS-06-3-SP3.1	Strength

Reset Evidence Delete unchecked

Activeness: (1) The sequence and interactions of the standard process with other processes are determined.

Evidence	Instantiation	OMG Practice	Characteristic
<input checked="" type="checkbox"/> Interview PRO-06	QPF	TS-06-3-SP3.1	Strength
<input checked="" type="checkbox"/> KDM minute	SMCE	TS-06-3-SP3.1	Strength
<input checked="" type="checkbox"/> KDM Presentation	SMCE	TS-06-3-SP3.1	Strength
<input checked="" type="checkbox"/> Management proposal	QPF	TS-06-3-SP3.1	Strength
<input checked="" type="checkbox"/> Project Life Cycles	Organizati...	TS-06-3-SP3.1	Strength
<input checked="" type="checkbox"/> Project Management Process	Organizati...	TS-06-3-SP3.1	Strength
<input checked="" type="checkbox"/> Project Plan	SMCE	TS-06-3-SP3.1	Strength
<input checked="" type="checkbox"/> Project Proposal	OSPF2	TS-06-3-SP3.1	Strength
<input checked="" type="checkbox"/> Project SQA Plan	QPF	TS-06-3-SP3.1	Strength
<input checked="" type="checkbox"/> QA Plan Template	Organizati...	TS-06-3-SP3.1	Strength
<input checked="" type="checkbox"/> Quality Assurance Plan	OSPF2	TS-06-3-SP3.1	Strength

Reset Evidence Delete unchecked

Activeness: (2) Required competencies and roles for performing a process are identified as part of the standard process.

Evidence	Instantiation	OMG Practice	Characteristic
----------	---------------	--------------	----------------

Reset Evidence Delete unchecked

Reset Profile Report Close



PA 3.2 – Process Deployment

ISO15004 Process Profiler

Process Name: F.3.1.1 Acquisition preparation
 The purpose of the Acquisition preparation process is to establish the needs and goals of the acquisition and to communicate these with the potential suppliers.

PA3.1 | PA2.1 | PA2.2 | PA3.1 | **PA3.2** | PA4.1 | PA4.2 | PA5.1 | PA5.2 | Process Summary | ISO 15004 Profile Summary

Process Attribute: PA3.2 Process deployment attribute

Process Attribute Achievement: Not Rated

Strength: [] Weakness: []

Achievement: (0) Defined process is deployed based upon an appropriately selected and/or tailored standard process

Related Evidence

Evidence	Initiation	CMMI Practice	Characteristic	Evidence Description
RM-Process Management Category	Organizational	TS-60 3-SP3.1	Strength	The QMS provides support for most functions in projects within Critical.
Follow-up Interviews	WVWERB	TS-60 3-SP3.1	Strength	
Iterative RM-Off	OMF	TS-60 3-SP3.1	Strength	
KDR inputs	SMICE	TS-60 3-SP3.1	Strength	
KDR Presentation	SMICE	TS-60 3-SP3.1	Strength	
Project Life Cycle	Organizational	TS-60 3-SP3.1	Strength	
Project Management Process	Organizational	TS-60 3-SP3.1	Strength	
Project Master Plan	SMICE	TS-60 3-SP3.1	Strength	
Project Plan	SMIAI	TS-60 3-SP3.1	Strength	
Project Plan (PMP)	OMF	TS-60 3-SP3.1	Strength	
Project Proposal	SSP2	TS-60 3-SP3.1	Strength	
Project SQA Plan	OMF	TS-60 3-SP3.1	Strength	
Project Technical and Management proposal	SMICE	TS-60 3-SP3.1	Strength	
Proposal	WVWERB	TS-60 3-SP3.1	Strength	
QA Plan Template	Organizational	TS-60 3-SP3.1	Strength	
Quality Assurance Plan	SSP2	TS-60 3-SP3.1	Strength	

Reset Evidence | Delete Unchecked

Achievement: (0) Assigned roles, responsibilities and authorities for performing the defined process are assigned and communicated

Related Evidence

Evidence	Initiation	CMMI Practice	Characteristic	Evidence Description

Reset Evidence | Delete Unchecked

Achievement: (0) Personnel performing the defined process are competent on the basis of appropriate education, training, and experience

Related Evidence

Evidence	Initiation	CMMI Practice	Characteristic	Evidence Description

Reset Evidence | Delete Unchecked

Achievement: (0) Required resources and information necessary for performing the defined process are made available, allocated and used

Related Evidence

Evidence	Initiation	CMMI Practice	Characteristic	Evidence Description

Reset Profile | Reset | Close



Pilot Appraisal Report

Result considered a successful demonstration of ability to fulfill 15504 requirements and generate 15504 process profile relative to a separate process reference model,

Demonstrated criticality of adequate supporting automation

Pilot Observations

Improvement opportunities were identified for support automation

Sample of 12207 processes were rated and a sample of 9001 clauses were examined

Observed consistency between CMMI findings and prior 9001 audit reports as well as prior SPICE assessments, given the expected progress of the improvement program at Critical.

Issues from the Pilot Appraisal

Model-related:

- Deficiencies previously identified in the relationship between CMMI Generic Practices and the 15504 Measurement Framework had a significant impact on assessment of Level 3 Process Attributes.

Technology-related:

- Significant issues in usability of the “translation” functions.
- Need to incorporate the ability to capture additional evidence where needed.

Further effort

Additional pilot appraisals are required to identify any additional issues and to raise confidence in the translation mechanism as well as the translation requirements of 15504.

Ideally a combined CMMI / SPICE assessment using two independent teams should be undertaken.

The ability to perform “bi-directional” translation would be useful (i.e. determine CMMI capabilities from a SPICE assessment) would be useful.

Beta-2 Release

Significant improvements to the Evidence Registry and to Ratings Generation.

CMMI – ISO 15504 mapping functions improved in line with findings from the Pilot Appraisal.

Available for download from

<http://www.sqi.gu.edu.au/AppraisalAssistant>

The SQI is committed to two further beta releases of the Appraisal Assistant in 2007.



Beta Test Programme

Initial release 2005

Beta 2 release 28 July 2006

503 registered beta testers

217 downloads of Beta 2 version

More Information

The Appraisal Assistant:

- <http://www.sqi.gu.edu.au/AppraisalAssistant>

Contact Details:

- David Kitson dhk@sei.cmu.edu
- Loretta Kitson kamoljk@mindspring.com
- Terry Rout T.Rout@griffith.edu.au